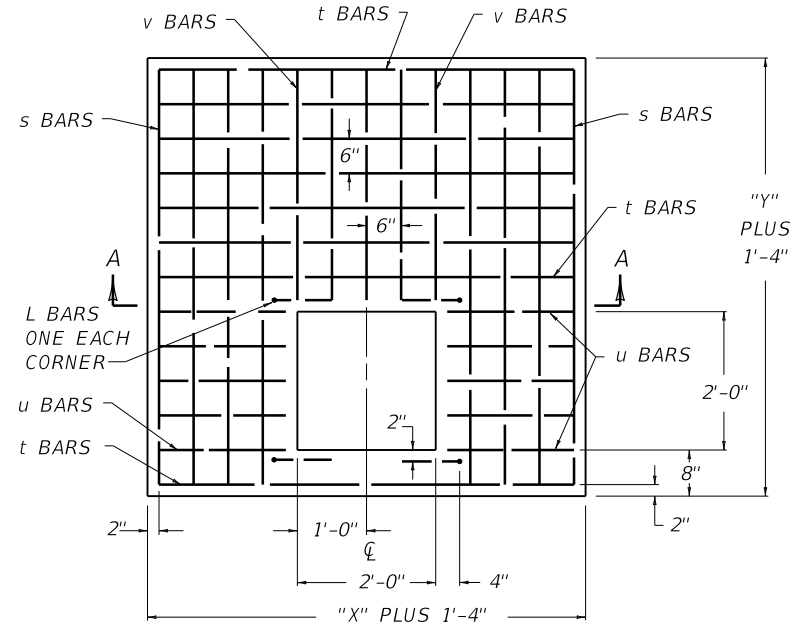


REINFORCEMENT STEEL FOR 8" LID

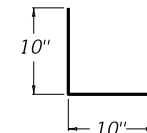
~ NOTES ~

SIZE		NO. 5 STEEL BARS								LBS.
X	Y	BAR s		BAR t		BAR u		BAR v		
		QTY.	LIN. FT.	QTY.	LIN. FT.	QTY.	LIN. FT.	QTY.	LIN. FT.	
2'-0"	2'-0"	-	-	-	-	-	-	-	-	7
	2'-6"	4	3'-6"	6	3'-0"	-	-	10	0'-10"	49
	3'-0"		4'-0"	8					1'-4"	63
	3'-6"		4'-6"	10					1'-10"	76
	4'-0"		5'-0"	12					2'-4"	90
	4'-6"		5'-6"	14					2'-10"	103
5'-0"	6'-0"		16	3'-4"					117	
2'-6"	2'-0"	4	3'-0"	4	3'-6"	-	-	10	-	34
	2'-6"		3'-6"	6					0'-10"	52
	3'-0"		4'-0"	8					1'-4"	67
	3'-6"		4'-6"	10					1'-10"	81
	4'-0"		5'-0"	12					2'-4"	96
	4'-6"		5'-6"	14					2'-10"	111
3'-0"	2'-0"	8	3'-0"	4	4'-0"	20	0'-10"	10	-	66
	2'-6"		3'-6"	6					0'-10"	87
	3'-0"		4'-0"	8					1'-4"	105
	3'-6"		4'-6"	10					1'-10"	123
	4'-0"		5'-0"	12					2'-4"	141
	4'-6"		5'-6"	14					2'-10"	158
3'-6"	2'-0"	8	3'-0"	4	4'-6"	20	1'-1"	10	-	73
	2'-6"		3'-6"	6					0'-10"	96
	3'-0"		4'-0"	8					1'-4"	114
	3'-6"		4'-6"	10					1'-10"	133
	4'-0"		5'-0"	12					2'-4"	152
	4'-6"		5'-6"	14					2'-10"	171
4'-0"	2'-0"	12	3'-0"	4	5'-0"	20	1'-4"	10	-	93
	2'-6"		3'-6"	6					0'-10"	119
	3'-0"		4'-0"	8					1'-4"	141
	3'-6"		4'-6"	10					1'-10"	162
	4'-0"		5'-0"	12					2'-4"	184
	4'-6"		5'-6"	14					2'-10"	206
4'-6"	2'-0"	12	3'-0"	4	5'-6"	20	1'-7"	10	-	101
	2'-6"		3'-6"	6					0'-10"	127
	3'-0"		4'-0"	8					1'-4"	150
	3'-6"		4'-6"	10					1'-10"	173
	4'-0"		5'-0"	12					2'-4"	196
	4'-6"		5'-6"	14					2'-10"	219
5'-0"	2'-0"	16	3'-0"	4	6'-0"	20	1'-10"	10	-	120
	2'-6"		3'-6"	6					0'-10"	150
	3'-0"		4'-0"	8					1'-4"	176
	3'-6"		4'-6"	10					1'-10"	202
	4'-0"		5'-0"	12					2'-4"	228
	4'-6"		5'-6"	14					2'-10"	254
	5'-0"		6'-0"	16					3'-4"	280

1. IN ADDITION TO THE CHARTED STEEL, FOUR "L" BARS ARE REQUIRED IN THE LID AND ARE INCLUDED IN THE TOTALS.
2. CONCRETE QUANTITIES FOR LID ARE INCLUDED ON "DIMENSIONS AND ESTIMATE OF QUANTITIES (PIPE CHAMBER)", SEE CUR. STD. DWG. RDB-410.
3. REINFORCEMENT SHALL HAVE A CLEAR DISTANCE OF 2" FROM THE OUTSIDE FACE UNLESS OTHERWISE SHOWN.



SECTION A-A



L BAR DETAIL

USE WITH CUR. STD. DWGS.
RDB-280 RDB-281 RDB-282
RDB-400 RDB-410 RDB-420

KENTUCKY DEPARTMENT OF HIGHWAYS	
CURB BOX INLET TYPE B (DETAIL & BAR CHART FOR 8" LID)	
STANDARD DRAWING NO. RDB-283-04	
SUBMITTED	DATE
APPROVED	DATE